

# West Riding Woodcarvers' Association



August 2016  
Newsletter Issue 246

Patron  
Dr Ingrid M Roscoe  
Lord Lieutenant of  
West Yorkshire

Life members  
Albert Hobson  
Jane Renshaw

Well here we go again after our summer shut down with plenty of activities coming up before the year end.

Before closing down for our summer recess we had the pleasure of welcoming back to Shepley, on Saturday May 14th, David Peckett who very eloquently and with great insight and enthusiasm talked about his recently published book 'The Bloodsucker - The Boy Behind the Book'

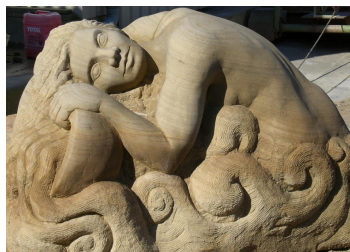
David spoke about how his childhood experiences led to his lifetime love of adventure despite a serious physical disability caused by a childhood misfortune.

Without doubt David is a very gifted speaker and, although a strange subject for our type of meetings, held his audience in rapt attention with tales that managed to take all of us back to our childhood. I'm sure that we shall be seeing David back to Shepley at some time in the future. Many thanks David.



**10th September 2016 - Chris Kelly.** Chris is an internationally known sculptor from the Knaresborough area who has lectured and exhibited in various art galleries all over the world. He specialises in resin bronze figures, as depicted in the picture to the right.

**8th October 2016 - Melanie Wilks.** Melanie is a sculptor, artist and stone carver whose sculptures can be seen in towns, parks and public spaces around Yorkshire and North Lincolnshire. Melanie lives in Dewsbury and runs stone carving courses which I'm sure she will be telling us all about.



Melanie Wilks

**5th November 2016 - Michael Painter.** It only seems two minutes since Michael was with us last giving one of the most interesting talks on his early working life and the history of stone and wood carving. One of the reasons we have asked Michael back again was a multi request by those present at his last visit for him to demonstrate hair carving. I'm sure, knowing Michael as we do, that his time with us will cover far more than one subject. Note. This is a full day session with pea and pie lunch as usual.



Chris Kelly

**10th December 2016 - Christmas Luncheon at Crow Nest Golf Club. Tilly Dagnall and her mum Jacqueline.** Tilly and Jacqueline are the daughter and wife of our old friend Thompson and if anything like Thompson, minus the leather cap I trust, then we are in for a treat. Tilly has a multitude of talents that covers printmaking, painting and sculpture and mum Jacqueline is a leading expert on anything to do with plants and garden/flower display. Certainly one for our ladies this year.



Tilly Dagnall

Some while ago I got a call from Kevin Sharp, Clerk to the West Yorkshire Lieutenancy, with an invitation to send two people, as the guest of our Patron Dr Ingrid Roscoe, down to London on Sunday 12th June 2016 to attend the Queen's 90th Birthday Celebration on the London Mall. It was decided that Margaret and Jeff Myatt should be awarded this opportunity for all the work they both do for our club.

Margaret and Jeff pushed the boat out and decided to add a few days to either side of the Sunday and even the English weather, that wasn't very kind in the morning but brightened up in the afternoon, couldn't dampen what turned out to be a day to remember.

At some appropriate time in the future Margaret and Jeff will talk to the club about their experience. I'm sure we are all delighted that they had a super trip to the capital.



Spot Margaret in the crowd

On a more sobering tone I'm sorry to report that our Life Member, Jane Renshaw, is still very much struggling with the fall she had many months ago that damaged her elbow. She has no bone forming over the fracture and a full elbow replacement is a possibility. I'm sure we all send our best wishes for a speedy recovery to Jane.

On the plus side Frank Greenwood is back bowling again after being rushed to hospital some months ago with a blood poisoning problem and recently having his gall bladder removed. We look forward to Frank joining us again at Shepley and Brooksbank.

## North of England Woodworking and Machinery Show 18th, 19th & 20th November & Queens Garden Party at Bowcliffe Hall Saturday 25th June 2016.

I previously reported that we had been allocated a 6 metres wide x 3 metres deep stand at the show which now should give us room to display carvings on either side of the children's hospice panel that we are borrowing back for a few days.

In June our club, at the request of Dr Roscoe, put on a display at her Queen's Garden Party at Bowcliffe Hall, the headquarters of the Lieutenantcy, where a new type of display board, designed and made by Jeff Myatt and Derek Adams, was trailed.

The display board is manufactured from two standard doors hinged together with shelves introduced at strategic places and the whole covered in green blaze cloth that gives it a very smart appearance. The display board was ideal and the plan now is to make another identical one and to locate one on either side of the children's panel at the Harrogate show. A new sign has also been purchased and handouts will be designed and printed before the show.

I have been in conversation with the exhibition organisers and we should be getting a booklet by the end of August, or early September, explaining what we can and cannot do and detailing when we can set up and knock back down. Once we receive this we shall be calling a meeting for members who want to get involved in setting up and stewarding. Without a doubt this is the biggest event that we have attended with thousands of visitors expected over the three days and we must make sure we approach it in a very professional and well planned manner.

I have also agreed with the Editor of the Woodcarving magazine that he will insert something in a future magazine about our appearance for the first time at the Woodworking Show. The article should appear in the November/December edition that will come out in late October. What will be said, I have no idea...!



### Royal Armouries, Leeds. Thursday June 2nd 2016.

Things with the Armouries are progressing rather slower than we would wish, but probably what we expected. On the 11th July I sent an email, plus a write-up of our requests, to Dr Edward Impey but I am still waiting for a reply. I sent another email to his secretary on the 11th August asking her to confirm that Edward did indeed receive my initial email. She confirmed he had received it.

It's going to be a long slow road but one day we will get to where we want to be. Incidentally, Bryan Hodgson's son Simon, who originally loaned us the spotlights that we used before the panels were located in their present location, has kindly donated this set of lights to the club for use at the Armouries. They are growing cobwebs in Dennis's garage at the moment waiting for a call from the Armouries. .

### Woodcarving Classes:

The Queen Elizabeth Grammar School class and the Brooksbank class both start at 7:00pm on Monday evening **12th September 2016**.

We know that QEGS have another gentleman, Eric Thornton, starting and I understand from Adrian that he is going to become a full member. A big welcome from all of us. Brooksbank, as usual, is bursting at the seams and we again have more members than bench places, but we manage, somehow. After a few years away Anne Ellwood has dug out her rusty old chisels and it will be nice to see her back again.

The position with All Saints daytime class is still not clear. I have been in regularly contact with Deborah Walker regarding the situation with the re-building of the school. Unfortunately, I'm still waiting for them to confirm they can find us a couple of hours in the woodwork-ing room. We may have to move the day, or indeed find a new school if they cannot accommodate us. But I do think they are trying to help.

**Ripon Cathedral club trip.** On 23rd May 2016 intrepid woodcarvers, together with partners and friends, gathered in Huddersfield for a coach trip to explore the history of Ripon Cathedral and particularly the woodcarving work carried out over the Cathedral's extensive history. We were met on arrival at Ripon by Rev. Derek Ching whose enthusiasm for the history of the building was evident throughout the day. The first session saw us splitting into smaller groups and Derek and his colleagues conducted us around the building with a comprehensive commentary on its history, including the abuse caused by the Reformation and by Oliver Cromwell and his cohorts.

After a break for lunch we reconvened for the main event of the day when Derek allowed us to examine the carvings in detail including areas where the public are not normally allowed access. Derek produced some very early and somewhat crude carvings which are normally kept in the Cathedral vaults and invited our comments and criticisms. We were then allowed into the rear stalls of the choir pews and invited to examine the canopies and miserichords not usually accessible to the public. It soon became apparent that the carvings, all in oak, were in fact the work of several different carvers of varying ability and skills. Derek also invited us to spot a few small carvings that were obviously the work of carvers who invented their own agendas and were not necessarily following instructions! We were somewhat dismayed to be asked to jot down our individual critiques and return our notes to Derek at the end of our visit so that he could analyse the opinions of a team of experts! Nevertheless, we tried to make some useful contribution and our efforts seemed to be appreciated. Derek and his colleagues are to be congratulated for their boundless enthusiasm in giving up their time for us and from the comments of our members on the journey home the entire day was a great success and enjoyed by all. By Brian Walker.

### Club Insurance:

It is absolutely essential that the club carries Public Liability Insurance, mainly because all the school premises that we use stipulate, without exception, that we are fully covered and ask for a copy of our insurance policy.

We also need this cover for events and the exhibit organisers for Harrogate have already asking for confirmation of our cover.

Unfortunately, this cover seems to increase each year and this year we are paying out £160.19. Everybody who attends the carving classes, in particular, has a responsibility to help cover this cost. We all do this by paying our annual subs of £20.00 per year. In certain cases, where members for whatever reason cannot attend Shepley meetings, or fully participate in club activities, they take out Social Membership at £5.00 per year. If they attend carving classes they are asked for a further contribution, over class subs, of an additional £5.00.